



ROSETTI SUPERYACHTS

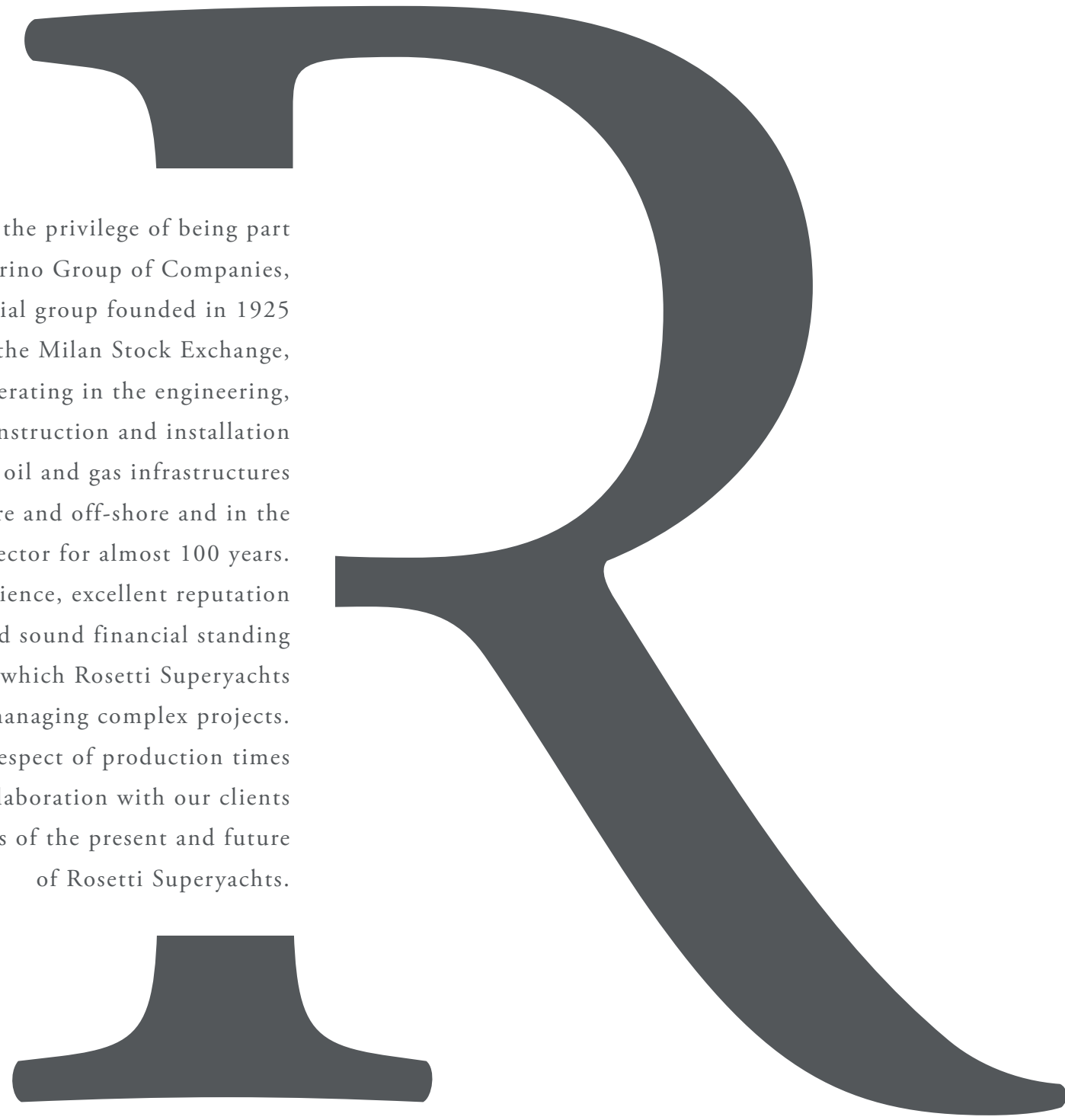
RSY 52M EXPLORER



ROSETTI SUPERYACHTS

52M EXPLORER

RSY CONCEPT

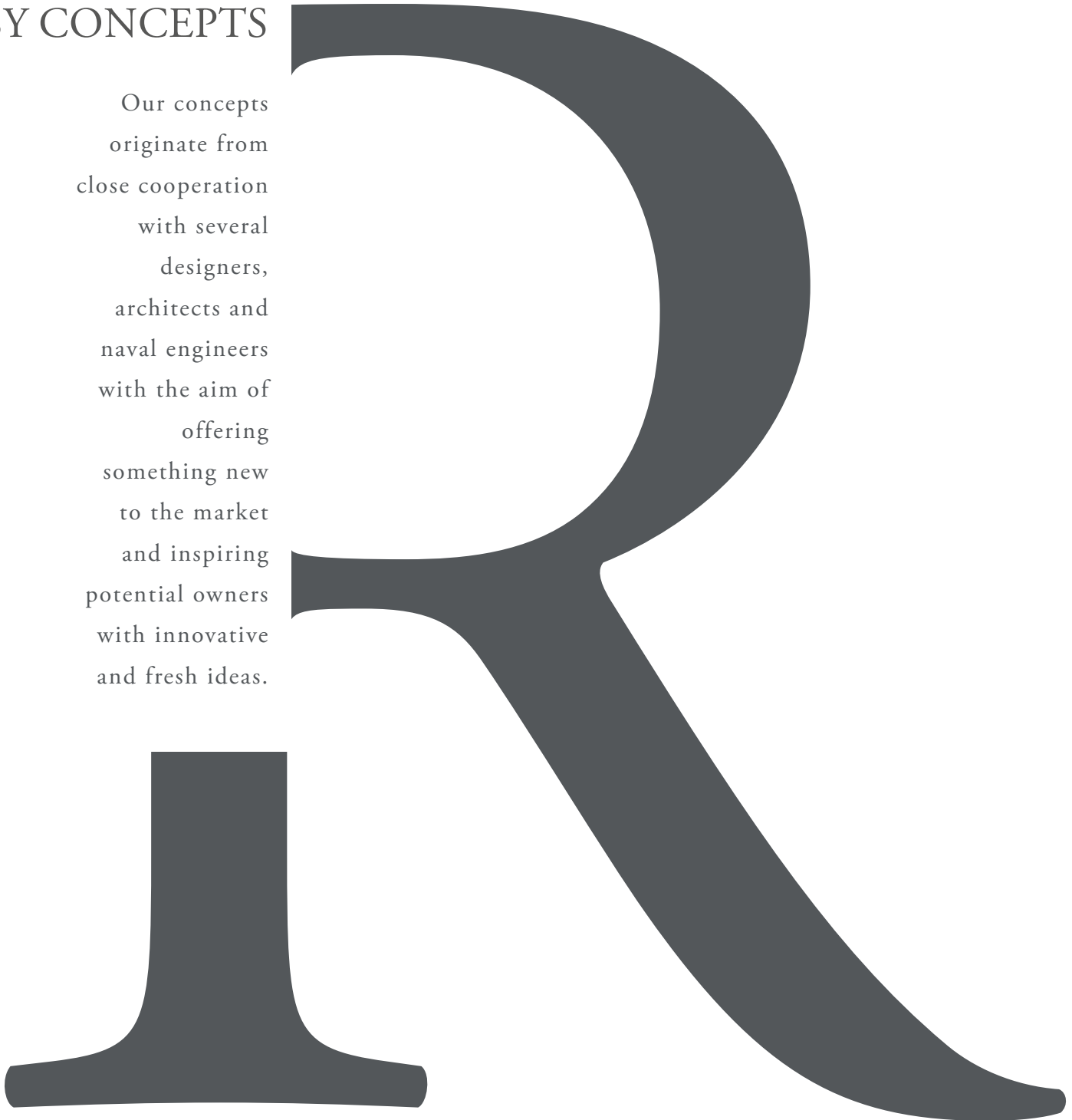


Rosetti Superyachts has the privilege of being part of Rosetti Marino Group of Companies, a solid industrial group founded in 1925 and currently listed on the Milan Stock Exchange, successfully operating in the engineering, procurement, construction and installation of oil and gas infrastructures on-shore and off-shore and in the shipbuilding sector for almost 100 years. Experience, excellent reputation and sound financial standing are all elements which Rosetti Superyachts can rely on when managing complex projects. Quality of execution, respect of production times and constant collaboration with our clients are the cornerstones of the present and future of Rosetti Superyachts.



RSY CONCEPTS

Our concepts
originate from
close cooperation
with several
designers,
architects and
naval engineers
with the aim of
offering
something new
to the market
and inspiring
potential owners
with innovative
and fresh ideas.

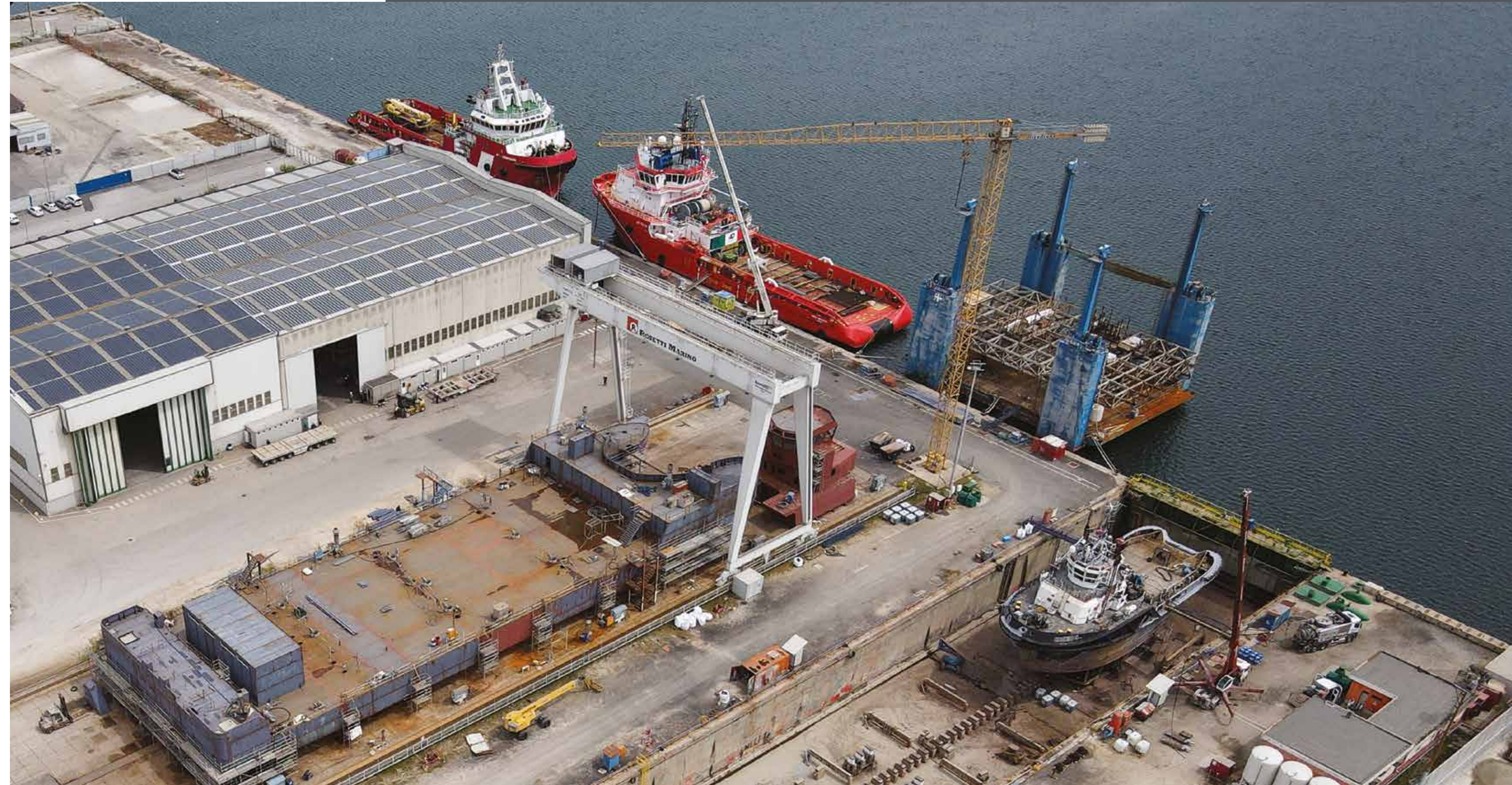


OUR FACILITIES

San Vitale Shipyard, the historical Rosetti Marino facility located in the Italian port of Ravenna, is where all Rosetti Superyachts vessels are built and where the refitting services are performed. The spacious production shipyard covers a total area of 257.000 sqm. An area of 65.000 sqm is specifically dedicated to shipbuilding including berthage, mooring and covered surfaces encompassing approximately 17.000 sqm. The yard also includes two 25m by 100m construction sheds, 4.000 sqm pertaining to mechanical workshops, assembly areas with overhead cranes, pre-assembly areas with a permanent roof, 3 gantry cranes (1x100t and 2x35t) and a dry dock measuring 160m by 25m. The quay is 175m long with a 7.5m draft and from the Candiano canal has direct access to the Adriatic Sea. Rosetti Marino is certified to quality, environmental and safety standards ISO 9001, ISO 14001 e OHSAS 18001.



Building on
the extensive expertise
acquired by Rosetti Marino
in the refitting
of commercial vessels,
Rosetti Superyachts
offers comprehensive
refitting services
for large yachts
on its 160-metre long,
25-metre wide
and 8,5-metre deep
dry dock.



RSY 52M EXP

Unique and original, the 52m Explorer represents a category in itself. With its steel hull and superstructure in aluminium, it guarantees the performance and solutions of an Explorer together with the design and finish of a Superyacht.

PHI DESIGN LAB











An innovative, stylistic approach as an alternative to traditional yachts currently on the market. Based on a biomimetic concept, the project was inspired by the vein structure of leaves, with stylistic features adopted both on the outer hull and in the interiors. The end result is a yacht which is able to meet all owners' needs, even the most demanding ones. The aft deck is equipped with a pool featuring an ample solarium and an al fresco living area that can easily become a Touch&Go helipad. A garage area for the tender and patios that can be opened to create an 80 sqm area overlooking the sea, complete this unconventional yacht.







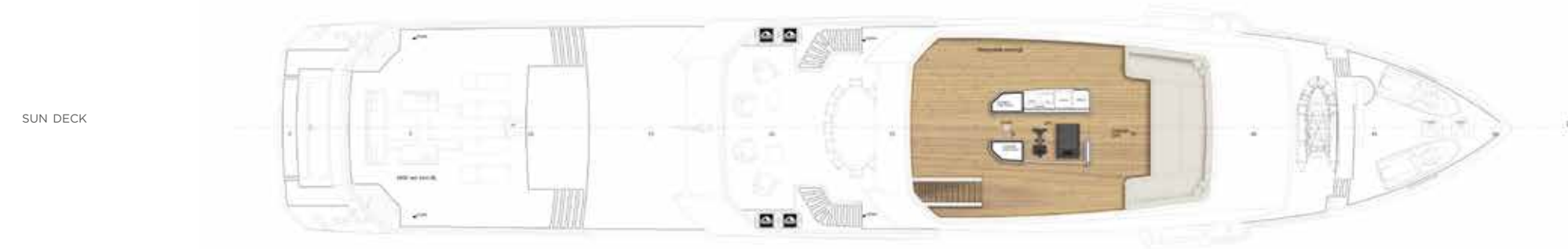


52M EXPLORER PHI DESIGN LAB

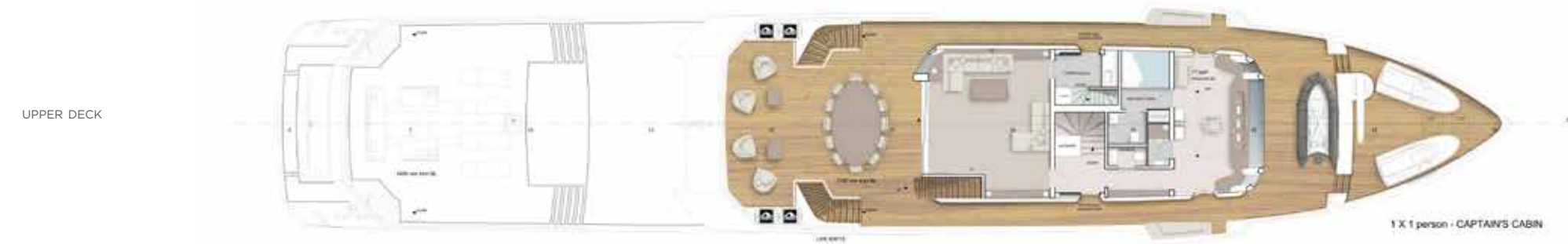
TECHNICAL DATA



PROFILE



SUN DECK

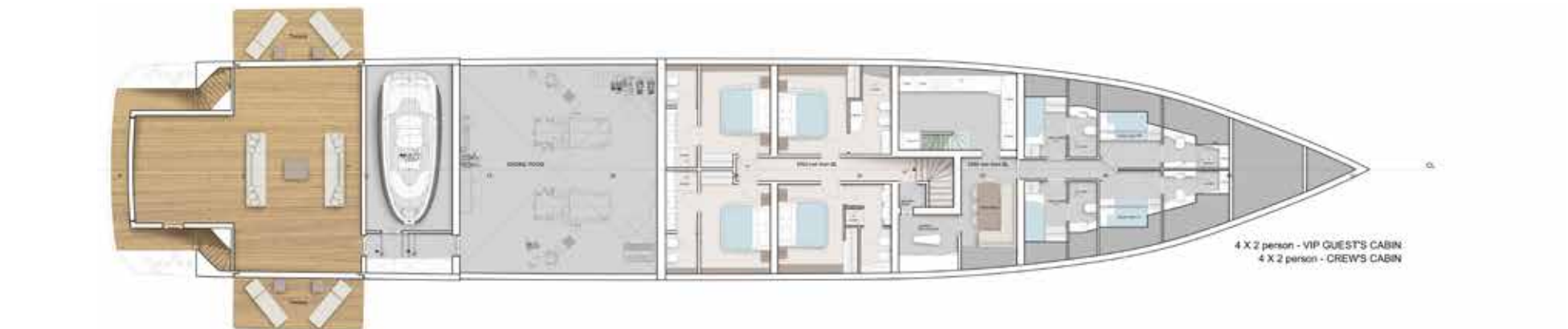


UPPER DECK

ENGINES	2 x MTU 12V2000M72, 1080 kW 2250rpm	1470 HP	MAIN SIZES	LoA: Length overall	52,00 m	170 ft	7 in
	2 x gearboxes ZF 3350 ratio 5,00:1			Lwl: Waterline Length	50,70 m	166 ft	4 in
SPEED	Maximum speed	16 knots		Maximum Beam	8,25 m	27 ft	1 in
	Cruising speed	12 knots		Depth	4,30 m	14 ft	1 in
RANGE (Nautical Miles)	Autonomy at 10 knots	4.500 n.m.		Moulded draft	2,20 m	7 ft	3 in
				Gross tonnage	499	GRT	



LOWER DECK
BEACH



LOWER DECK
GARAGE

GUESTS 10 - CREW 9

CERTIFICATION RINA C, ∇ HULL, \bullet MACH, Y, unrestricted navigation

The Technical data, performances, designs and graphic reproductions are purely indicative, are not contractual, shall not constitute in any circumstances whatsoever any contractual offer by the shipyard and refer to European standard models of motor yachts built by the shipyard. The only valid technical reference or description is the specific parameters of each motor yacht cited only on purchase of the same. Therefore the only indications binding on the seller are contained solely in the Contract and in the relevant Technical Specification.

EXTERIORS AND INTERIORS RENDERINGS:

52m EXP – project and renderings by Phi Design Lab

PHOTOS:

NEO Visual Project – Andrea Bernabini

Rosetti Marino Group Archive

Concept and graphic design: WTF*

September 2021

This document shall not constitute in any circumstances whatsoever any offer by the shipyard to any person or be incorporated into any contract. Any and all information contained in this document, including without limitation all technical data, performance, illustrations and drawings, are not contractual and refer to European standard models of motor yachts built by the shipyard and have been up-dated by the shipyard as of the date of issue of this document. The only valid technical reference or description is the specific parameters of each motor yachts cited only on purchase of the same. Therefore the only indications binding on the seller are contained solely in the sale agreement. This document is based on information available at the date of issue. Notwithstanding all efforts to insure accuracy, the information contained in this document may not cover all details, subsequent changes, not accurately foresee or report all possible scenarios. The shipyard reserves the right to modify its motor yachts and to substitute the manufacturers and/or the suppliers of any component and/ or system and/or equipment due to product changes and/or improvements and/or availability of supply, changes in laws and/or regulations applicable, technology, know-how, provided that any substituted component and/or system and/or equipment of the motor yachts shall be of equivalent or superior quality to that shown in this Brochure. Displays, photos, schemes, designs or examples contained in this document are solely and exclusively reproduced to highlight the information contained. Due to the different characteristics of each yacht, the shipyard declines any and all liability for any use thereof on the basis of the information contained in this document. This document and its contents may not be copied or reproduced and may not be modified or altered, in whole or in part. The sale of this document and its contents is prohibited and no admitted. Images may contain optional equipment or accessories, so do not necessarily comply with standard configuration.



ROSETTI SUPERYACHTS

Via Trieste 230 - 48122 Ravenna - Italy - T +39 0544 878111 - info@rosettisuperyachts.it - rosettisuperyachts.it

