



ROSETTI SUPERYACHTS

SHIPYARD EST. 1925

## SUPPLY VESSEL 48M

A SLEEK LINE AND AN AGGRESSIVE SHAPE FOR THIS 4-DECK SUPPLY VESSEL PROVIDING AMPLE LIVING SPACE BOTH INDOORS AND OUTDOORS.

THE SUN DECK MAY BE PROVIDED WITH A JACUZZI AND WITH A SEA VIEW FOR THE GUESTS TO ENJOY. THE UPPER DECK IS DEDICATED TO THE LIVING AREAS WITH A COVERED LOUNGE AND AN ALFRESCO DINING AREA.

THE COCKPIT AREA CAN STORE BIG TENDERS OR HAVE A TOUCH-AND-GO HELICOPTER AREA; IT IS ALSO VERY COMFORTABLE FOR SUNBATHING OR SIMPLY HAVING FUN IN THE POOL (OPTIONAL) AT THE STERN.

DESIGN STUDIO SPADOLINI









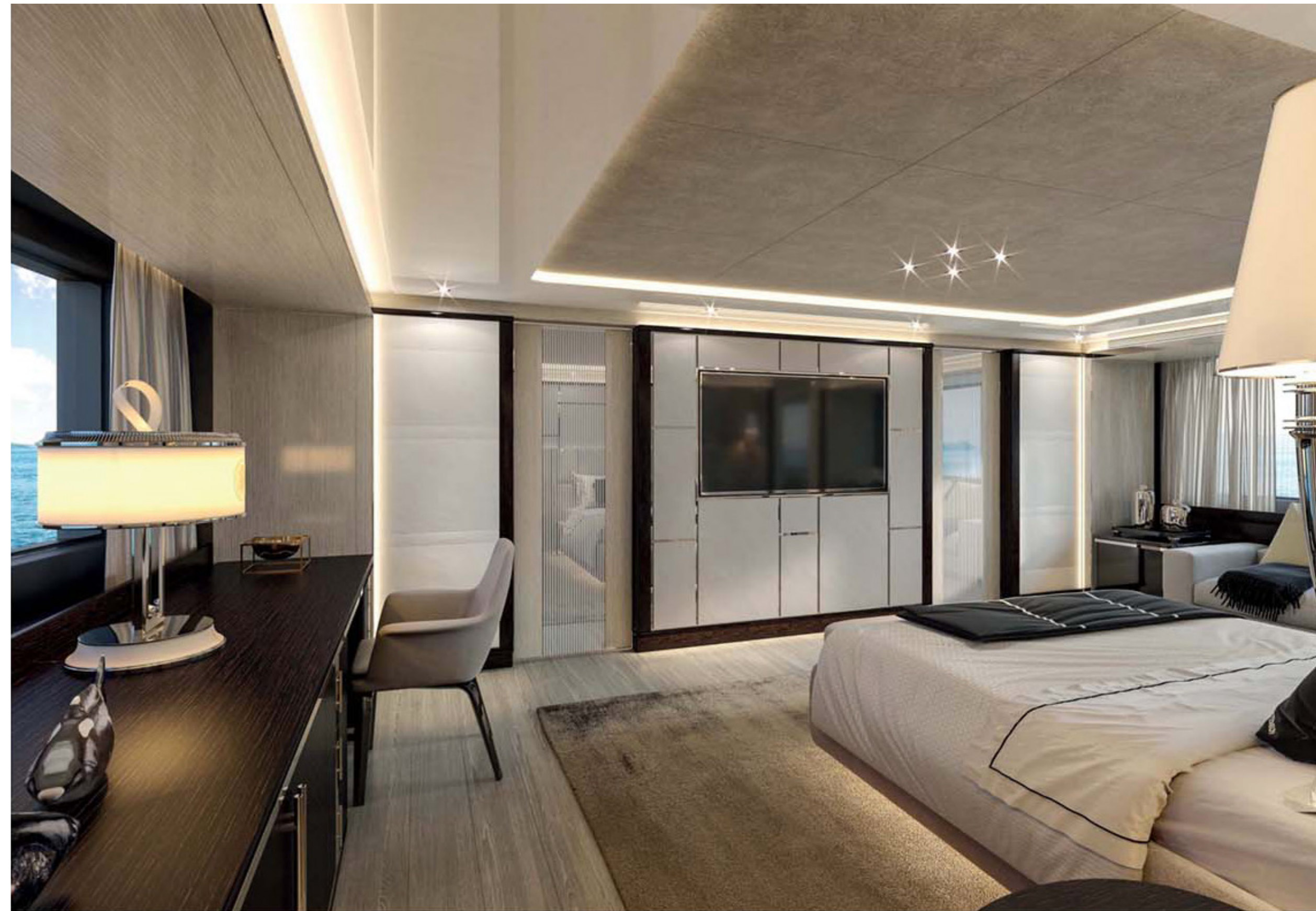






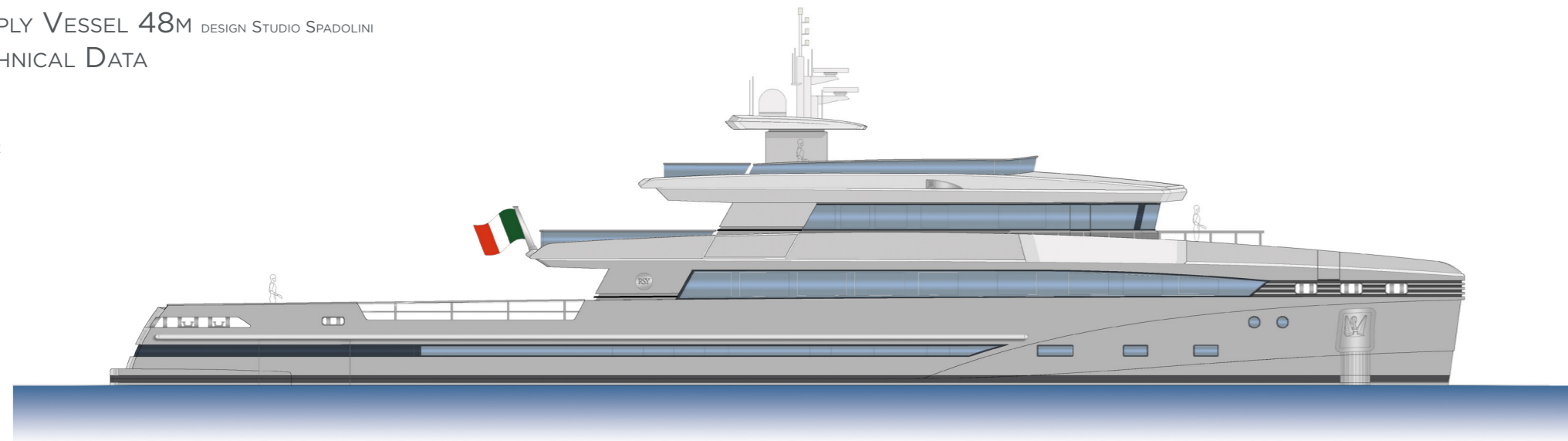
THE MAIN DECK IS ALLOCATED TO THE OWNER WITH A VAST LIVING AREA AND A SPACIOUS WIDE-BODIED CABIN AT THE BOW, WITH A SEPARATE STUDIO. THE GUESTS CAN BE HOSTED IN THE 4 DOUBLE CABINS ON THE LOWER DECK.



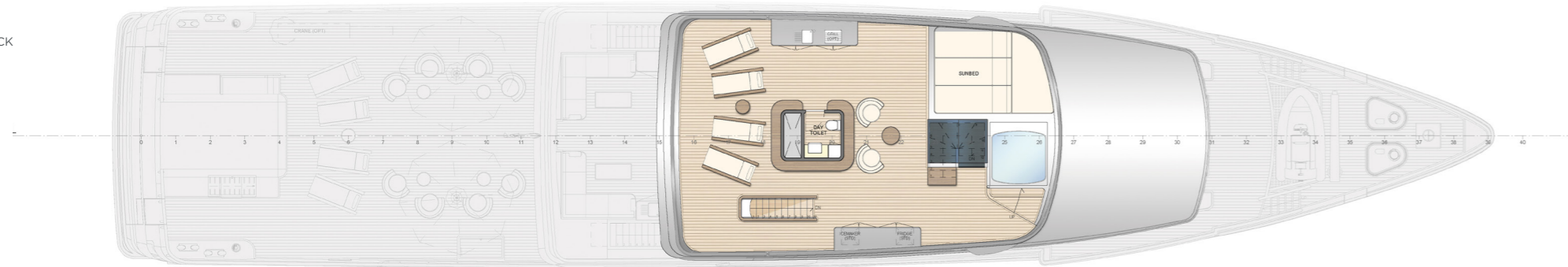


SUPPLY VESSEL 48M DESIGN STUDIO SPADOLINI  
TECHNICAL DATA

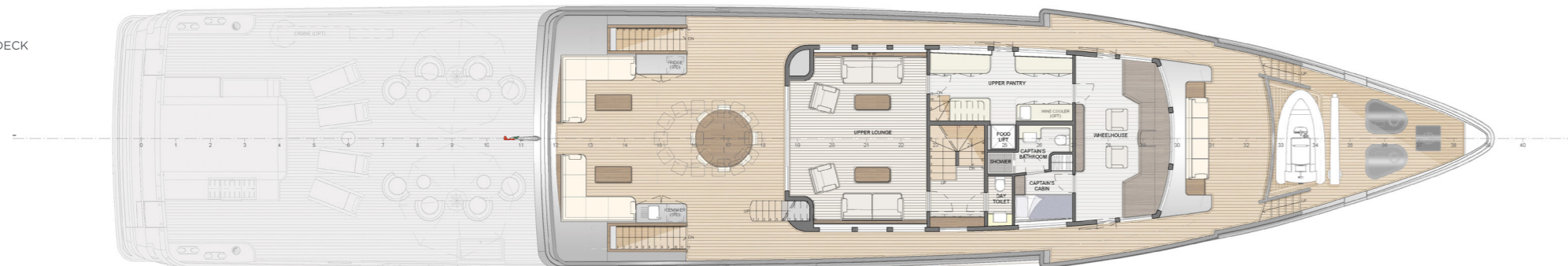
PROFILE



SUN DECK



UPPER DECK



MAIN DECK



LOWER DECK



ENGINES	2 x MTU 12V2000M72, 1080 kW 2250rpm 2 x gearboxes ZF 3350 ratio 5,00:1	2.160 kW	2937 HP
SPEED	Maximum speed	16 knots	
	Cruising speed	14 knots	
RANGE (Nautical Miles)	Autonomy at 10 knots	4.200 n.m.	

MAIN SIZES	LoA: Length overall	48,00 m	157 ft 6 in
	Lwl: Waterline Length	46,50 m	152 ft 7 in
	Maximum Beam	9,25 m	30 ft 4 in
	Depth	4,50 m	14 ft 9 in
	Moulded draft	2,50 m	8 ft 2 in
	Gross tonnage	499	GRT

MAXIMUM NUMBER OF GUESTS ON BOARD 10

CERTIFICATION RINA C, HULL, MACH, Y, unrestricted navigation

The Technical data, performances, designs and graphic reproductions are purely indicative, are not contractual, shall not constitute in any circumstances whatsoever any contractual offer by the shipyard and refer to European standard models of motor yachts built by the shipyard. The only valid technical reference or description is the specific parameters of each motor yacht cited only on purchase of the same. Therefore the only indications binding on the seller are contained solely in the Contract and in the relevant Technical Specification.

